

# BigHand Quantum

Stay ahead of the competition, stay productive and profitable, and drive efficiencies across your organisation with BigHand Quantum.

## Overview

Within your PMS, there already exists huge amounts of highly valuable data, but harnessing it can be complex.

Don't waste time and money wrestling your data - BigHand Quantum delivers easy, actionable intelligence. Slice and dice key information,

drill down to the detail, and give your teams the autonomy of access that they need.

## Easy integration

BigHand Quantum works with all legal PMS, existing reporting and other line of business systems.

## No training needed

Intuitive dashboards are core to the BigHand Quantum service, giving users access to coherent information tailored to their specific needs without any training requirements.

## Modules

Every BigHand Quantum module includes source connectors to the PMS, a MS SQL data warehouse specific to the relevant module, and a set of configurable dashboard templates that can be delivered using Microsoft SSRS or other dashboard providers such as Tableau or Qlik.

### Revenue

- Summary
- Time and utilization
- WIP
- Fees and realization
- Referrals
- Debt
- Cash
- Lock-up

### General Ledger

- Summary
- P&L
- Balance sheet
- Trial balance
- Cashflow
- Departmental spend
- Variance analysis
- Budget holders reports

### Profitability

- Firm
- Client group / client
- Matter / matter responsibility
- Lawyer
- Office / department
- Work type

### KPI/Partner performance

- Working capital management
- Portfolio management
- Timekeeper utilization management
- Key performance indicators
- Actions
- Balanced scorecard
- Lawyer / introducer analysis

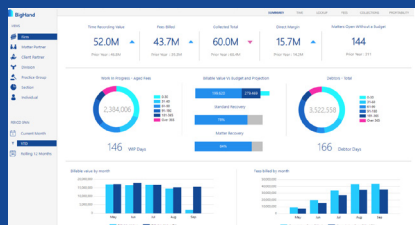
### Management accounts

- Interactive suite of reports
- Monthly management packs
- Consolidation of revenue, GL and profitability data
- Operational and managerial views on firm performance
- Firm and other organization hierarchy perspectives

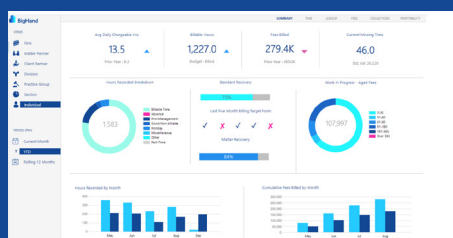
Monitor everything  
from KPIs and  
profitability to revenue  
and management  
accounts with BigHand  
Quantum

## Business benefits

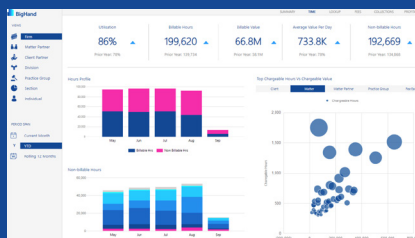
- Easily access hidden, valuable data within your systems
- Help your teams get to grips with organizational debt
- Configurable and easy to use dashboards, with little training needed
- Tailored to your teams' specific needs
- Automated, freeing up your staff to focus on higher value tasks
- Faster data collating and analysis
- Source agnostic, connecting to any data source



Firm Landing Page



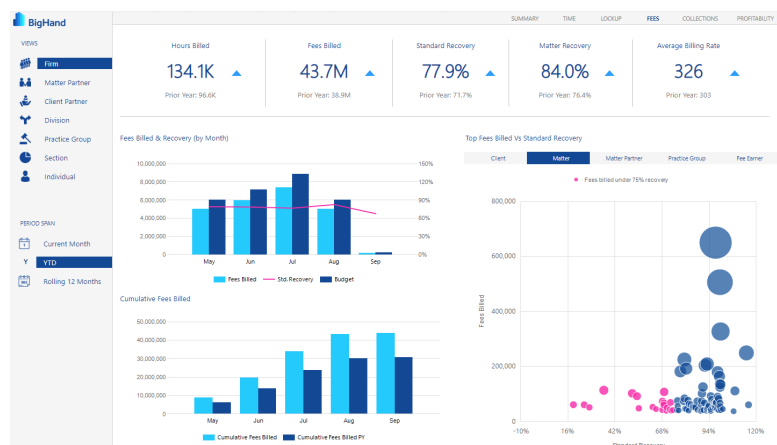
Individual Timekeeper Landing Page



Time Insights Page



Inventory / Investments Insights Page



Everyone is encouraged to look at the BigHand Quantum dashboard every day to ensure they can make the best possible decisions for clients. The first thing I do every morning is to look at the KPIs in BigHand Quantum reviewing the four key areas of time, fees, work in progress and debtors

BigHand Quantum user