

BigHand Quantum

Stay ahead of the competition, stay productive and profitable, and drive efficiencies across your organisation with BigHand Quantum.

Overview

Within your PMS, there already exists huge amounts of highly valuable data. But harnessing it can be costly and time-consuming.

Don't waste time and money wrestling your data - BigHand Quantum delivers easy, actionable intelligence. Slice and dice

key information, drill down to the detail, and give your teams the autonomy of access they need.

Easy integration

BigHand Quantum works with all legal PMS, existing reporting and other line of business systems.

No training needed

Intuitive dashboards are core to the BigHand Quantum service, giving users access to coherent information tailored to their specific needs without any training requirements.

Modules

Every BigHand Quantum module includes source connectors to the PMS, a MS SQL data warehouse specific to the relevant module, and a set of customisable dashboard templates that can be delivered using Microsoft SSRS or other dashboard providers such as Tableau or Qlik.

Revenue

- Summary
- Time and utilisation
- WIP
- Fees and realisation
- Referrals
- Debt
- Cash
- Lock-up

General Ledger

- Summary
- P&L
- Balance sheet
- Trial balance
- Cashflow
- Departmental spend
- Variance analysis
- Budget holders reports

Profitability

- Firm
- Client group / client
- Matter / matter responsibility
- Fee earner
- Office / department
- Work type

KPI/Partner performance

- Working capital management
- Portfolio management
- Timekeeper utilisation management
- Key performance indicators
- Actions
- Balanced scorecard
- Fee earner / introducer analysis

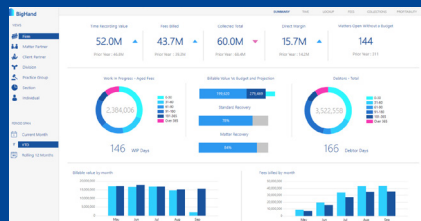
Management accounts

- Interactive suite of reports
- Monthly management packs
- Consolidation of revenue, GL and profitability data
- Operational and managerial views on firm performance
- Firm and other organisation hierarchy perspectives

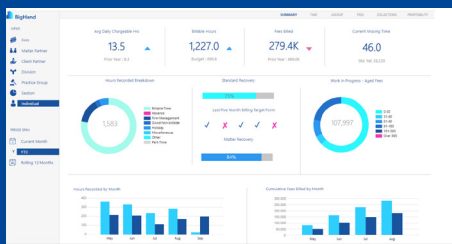
Monitor everything from KPIs and profitability to revenue and management accounts with BigHand Quantum

Business benefits

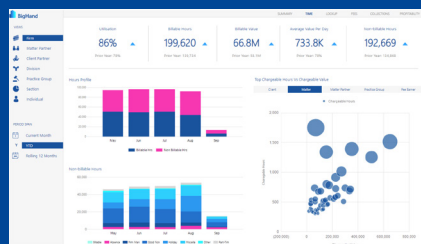
- Easily access hidden, valuable data within your systems
- Help your teams get to grips with organisational debt
- Configurable and easy to use dashboards, with little training needed
- Tailored to your teams' specific needs
- Automated, freeing up your staff to focus on higher value tasks
- Faster data collating and analysis
- Source agnostic, connecting to any data source



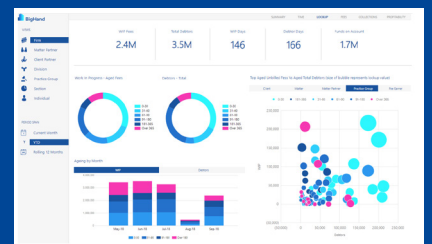
Firm Landing Page



Individual Timekeeper Landing Page

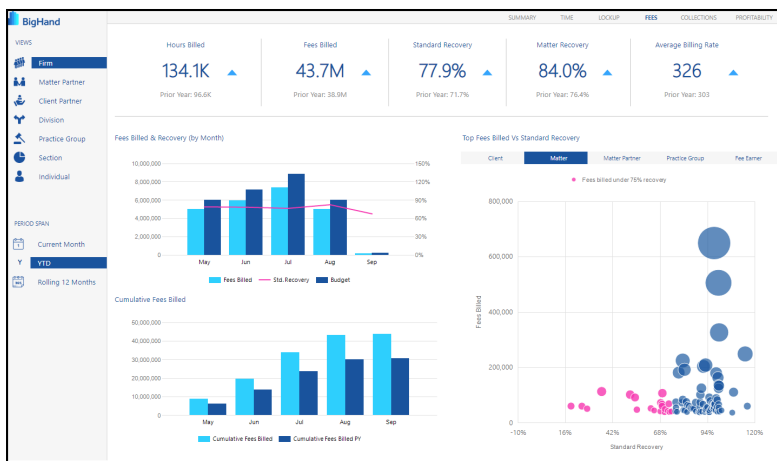


Time Insights Page



Lockup / Investments Insights Page

Fees Insights Page



Everyone is encouraged to look at the BigHand Quantum dashboard every day to ensure they can make the best possible decisions for clients. The first thing I do every morning is to look at the KPIs in BigHand Quantum reviewing the four key areas of time, fees, work in progress and debtors

BigHand Quantum user